



Accommodation Details

Castle (101 – 108)

The Castle accommodation has 8 rooms with 5 beds in each unit, they each have a triple bunk along with a double bed which splits to create 2 single beds (1 x accessible)

This accommodation is perfect for younger classes.

The block has 40 beds in total but 1 room within the block would need to be a teacher room (2 or 3 staff) which would reduce the number of students using this accommodation to 35 children (dependant on gender split).

If schools bring both male and female staff member or a larger amount of adults then we would also give them additional accommodation units, those being a Western Cabin or Lost World Lodge.

All rooms are en-suite.



	Exit	
5 Beds & Bathroom		2 or 3 Staff & Bathroom - TEACHER ROOM
5 Beds & Bathroom		5 Beds & Bathroom
5 Beds & Bathroom		5 Beds & Bathroom
5 Beds & Bathroom		5 Beds & Bathroom
	Exit	
Castle Accommodation		
One Leader Room Required in Castle Block		



Lost World Lodges (301 - 311)

We have 11 lodges which have a total of 54 beds. The double beds in this accommodation does not split which means we can sleep 54 people. The accommodation is suitable for Y5 and above and we would suggest having 2 teacher units within this area.

Having 2 x teacher accommodation units decrease the student capacity which would reduce to 44 children (dependant on gender split). The student numbers could increase to 49 if we gave your group the nearest Mermaid Den as a teacher room. All accommodation is en-suite.

10 x Lodges - 1 Double Room and 2 Twin Rooms & 1 x Lodge - 2 Twin Rooms (Accessible)





Western Cabins (201-210)

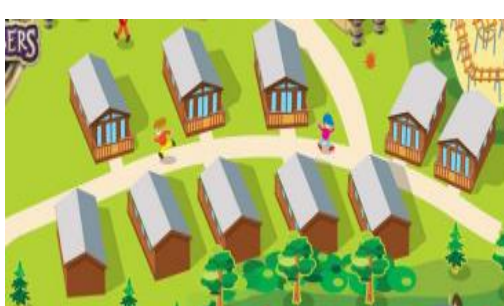
We have 10 Cabins which have a total of 30 beds. The double beds in this accommodation does not split which means we can sleep 30 people. The accommodation is suitable for Y5 and above and we would suggest having 2 teacher units within this area.

Having 2 x teacher accommodation units decrease the student capacity which would reduce to 24 children (dependant on gender split).

10 x Cabins - 1 Double Room and 1 Twin Room

All rooms are en-suite.

This Accommodation is ideal for smaller groups.





Mermaid & Pirate Dens (401 – 406 & 601 – 606)

We have 12 Dens which have a total of 36 beds. The double beds in this accommodation does not split which means we can sleep 36 people. The accommodation is suitable for Y5 and above and we would suggest having 2 teacher units within this area.

Having 2 x teacher accommodation units decrease the student capacity which would reduce to 30 children (dependant on gender split).

12 x Dens - 1 Double Bed and 1 Bunk Bed. All rooms are en-suite.





Fairy Hideout (121 – 130) & Tepee Tents

We have 10 Hideouts which have a total of 30 beds. The double beds in this accommodation does not split which means we can sleep 30 people. The accommodation is suitable for Y3 and above and we would suggest having 2 teacher units within this area.

Having 2 x teacher accommodation units decrease the student capacity which would reduce to 24 children (dependant on gender split).

If students are happy to bring sleeping bags and share the double bed space then this would increase the capacity to 32 children. If you would like to bring more students to enjoy an outdoorsy sleepover experience then please let us know so we can pitch up our mobile Tepees, this would increase the capacity to 60 + students and staff members

10 x Hideouts - 1 Double Bed and 1 Bunk Bed. Toilets & Showers situated next to this accommodation. Multiple Tepees can be added to increase capacity in this area. All accommodation and facilities would be exclusive for your group.





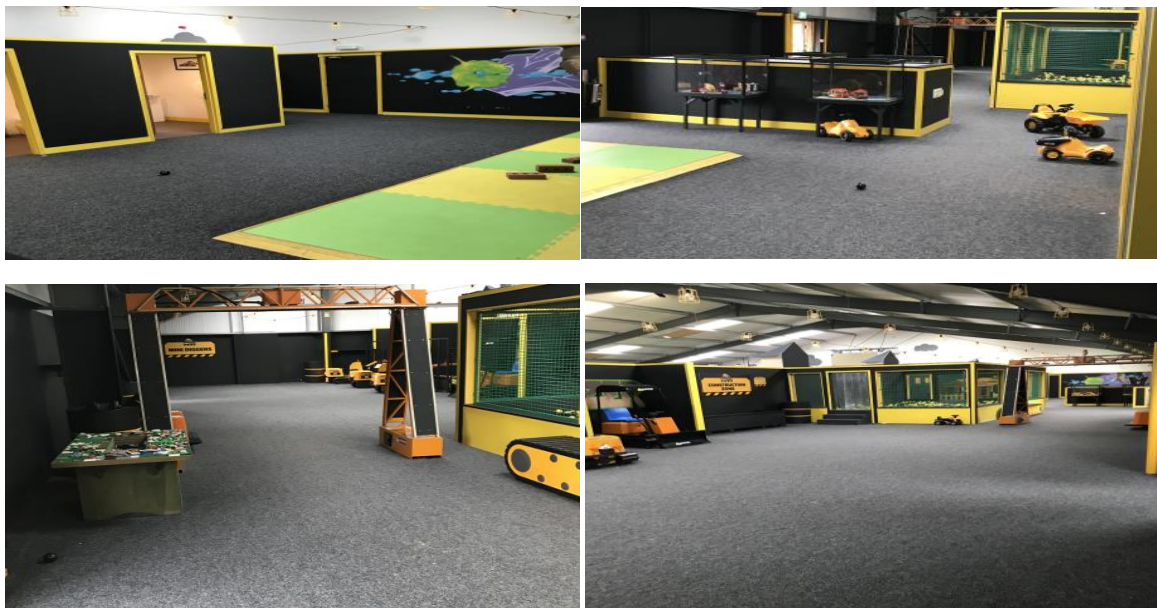
Slumber Sleepover Stays

A magical group sleepover experience that includes theme park rides and a one night stay in unique slumber quarters. Bring along your sleeping bag, roll mat and a pillow to enjoy this exciting indoor camping experience in a Theme Park!

The Slumber Stay is described as a budget stay but the only difference from our en-suite accommodation and our Fairy Hideouts & Tepee Tents is the sleeping area and the lower price! Your activity programme and menu are exactly the same as the two stay type mentioned above.

JCB – Buildzone

Capacity – Up to 60 People





Gully Town

Capacity – Up to 150 people





Blast Arena

Capacity – Up to 35 People



End