



Gulliver's Valley Resort – Schools & Groups Accommodation Guide



Please find within this document details of our accommodation. We are always increasing the number of accommodation units within the resort. This document will be updated when new accommodation units are added.

We can add temporary beds to most of our accommodation units.

Requests can be made for specific accommodation, but we cannot guarantee it will be assigned to your school.

To view our Slumber Stay (Indoor Camping) areas please scroll to the end of this guide.



Castle (101 – 108)

The Castle accommodation has 8 rooms with 5 beds in each unit, they each have a triple bunk along with a double bed which splits to create 2 single beds (1 x accessible). All rooms are en-suite.

This accommodation is perfect for younger classes.

The block has 40 beds in total but 1 room within the block would need to be a teacher room (2 or 3 staff) which would reduce the number of students using this accommodation to **35 children** (dependant on gender split). An additional temporary bed can be added to each student room taking the total student bed count to **42 beds** (dependant on gender split).

If schools bring both male and female staff member or a larger number of adults then we may add additional temporary beds to the student rooms to free-up a room for the additional staff members, we may also give you an additional accommodation unit near to the Castle.

Kettles & TV Remotes are removed from student rooms and the patio doors remain locked.



	Back Doors	
Sparkle 107	T a b l e	Pegasus 108
2 x Twin Beds & a Triple Bunk (Sleeps 5)		2 x Twin Beds & a Triple Bunk (Sleeps 5)
Jasmine 102		Cinderella 101
2 x Twin Beds & a Triple Bunk (Sleeps 5)		2 x Twin Beds & a Triple Bunk (Sleeps 5)
Rapunzel 104		Belle 103
2 x Twin Beds & a Triple Bunk (Sleeps 5)		2 x Twin Beds & a Triple Bunk (Sleeps 5)
Ariel 106		Snow White 105
2 x Twin Beds & a Triple Bunk (Sleeps 5)		2 x Twin Beds & a Triple Bunk (Sleeps 5)
	Front Doors	
An additional temporary bed can be added to each room if required. Ariel 106 is an accessible room.		



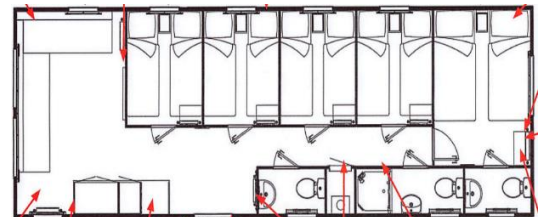
Explorer Lodges (Cook, Earhart & Scott)

Designed specifically for groups, located in the Fairytale Valley area these 3 accommodation units (red box on image below) can sleep up to 11 people. Each unit has a twin leader room with en-suite toilet, a pull-out sofa bed along with 4 x separate twin rooms. This accommodation is suitable for all age groups.

The lodges can be students only accommodation by utilising the leader room as student beds.

If an adult is not sleeping in this accommodation the kettle and TV remote can be removed.

In May 2025 2 more Explorer Lodges (blue box on image below) will be added to the Fairytale Valley area.





Lost World Lodges (301 – 310 + Woodland & UnderTheSea)

We have 12 Lost World Lodges. The accommodation is suitable for Y5 and above, teacher lodges will be within this area. All accommodation is en-suite.

6 x Lodges - 1 Double Room (doesn't split) and 2 Twin Rooms plus sofa bed (6 x 6 beds = 36 beds)

3 x Lodges - 1 Double Room (doesn't split) and 2 Twin Rooms (2 x 5 beds = 15 beds)

1 x Lodge - 2 Twin Rooms plus sofa bed (Accessible) (1 x 5 beds = 5 beds)

2 x Lodge (Woodland & UnderTheSea) – 3 x Twin Rooms (12 beds)

We remove the following items from all accommodation units (except teacher units) - Cutlery, Glasses, Toaster, Kettle & TV Remote. We also isolate the gas supply so the cooker cannot be turned on by students.

If more beds are needed for your school, we may be able to add additional beds or give your group additional units.





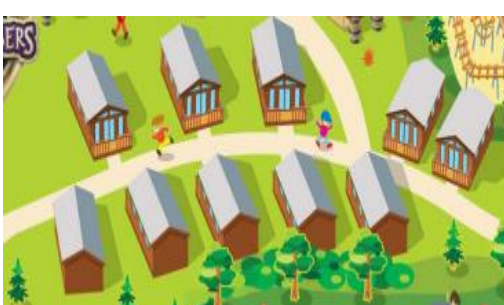
Western Cabins (201-210)

We have 10 Cabins which have a total of 40 beds. The double beds in this accommodation does not split but each unit has a sofa bed which means we can sleep 40 people without bed sharing. The accommodation is suitable for Y5 and above, teacher cabins will be within this area. All accommodation is en-suite.

Having 2 x teacher accommodation units decrease the student capacity which would reduce to 32 children (dependant on gender split).

10 x Cabins - 1 Double Room, 1 Twin Room plus 1 sofa bed.

We remove the following items from all accommodation units (except teacher units) - Cutlery, Glasses, Toaster, Kettle & TV Remote. We also isolate the gas supply so the cooker cannot be turned on by students.





Mermaid & Pirate Dens (401 – 406 & 601 – 606)

We have 12 Dens which have a total of 36 beds. The double beds in this accommodation does not split which means we can sleep 36 people. The accommodation is suitable for Y5 and above, teacher cabins will be within this area. All accommodation is en-suite. Additional temporary beds can be added to some of these units.

Having 2 x teacher accommodation units decrease the student capacity which would reduce to 30 children (dependant on gender split).

12 x Dens - 1 Double Bed and 1 Bunk Bed. All rooms are en-suite.





Fairy Hideout (121 – 132), Tipi Tents (251 – 255 & 261 – 262), Pixie Pods (150 & 151) & Wizard - Glamping

We have 12 x Hideouts, 7 x Tipi Tents & 2 x Pixie Pods in this area along (plus 5 x en-suite explorer lodges) with a toilet and shower block. The accommodation is suitable for Y2 and above. This area is slightly separate from our other accommodation as you can see from the picture at the start it includes fencing and a gate.

Each Fairy Hideout has a double bed along with 2 single beds, each unit can sleep up to 4 people making the total capacity for our Fairy Hideouts 48 people if the double bed is shared, if the double bed is not shared the capacity reduces to 36 beds. The Wizard Cabin sleeps 5 people.

We have 7 Tipi Tents in total. In 5 of the tents which have a 2 single beds & a double bed (can be split to create 2 x singles), in the other 2 tents we have 3 single beds & a double bed (can be split to create 2 x singles). We can currently sleep up to 30 people in our tents, if the double beds aren't split it reduces the capacity to 23 beds.

The 2 Pixie Pods are en-suite, they have a double bed and a bunk bed along with a small living space. These are generally used as staff accommodation. You may also want to allocate additional accommodation to staff dependant on the age of your students.





Slumber Sleepover Stays

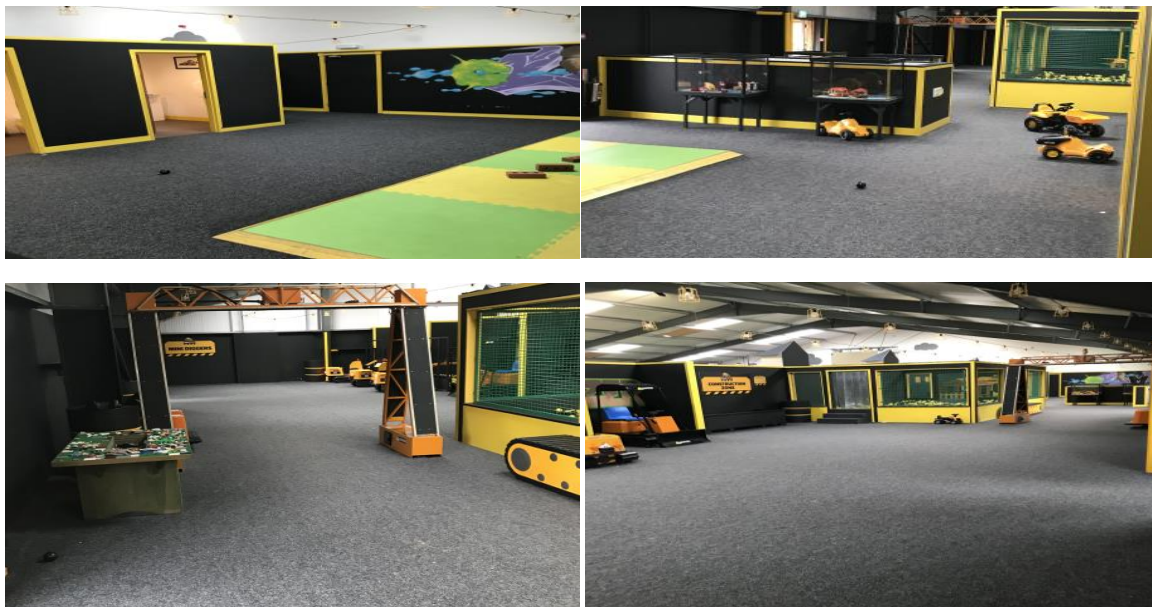
A magical group sleepover experience that includes theme park rides and a one-night stay in unique slumber quarters. Bring along your sleeping bag, roll mat and a pillow to enjoy this exciting indoor camping experience in a Theme Park!

The Slumber Stay is described as a budget stay but the only difference from our en-suite accommodation and our Fairy Hideouts & Tepee Tents is the sleeping area and the lower price! Your activity programme and menu are the same as the two-stay type mentioned above.

We have mentioned 3 areas below, we have plenty of indoor space for bigger groups.

JCB – Buildzone

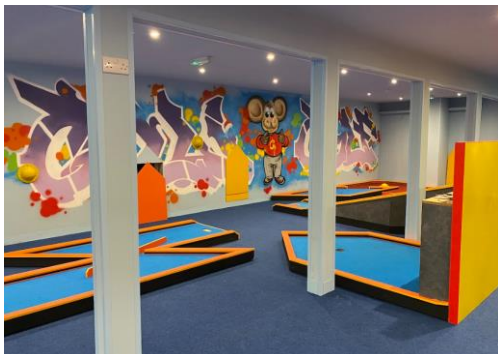
Capacity – Up to 76 People





Gully Town

Capacity – Up to 269 people





Blast Arena

Capacity – Up to 98 People





Lilliput Theatre

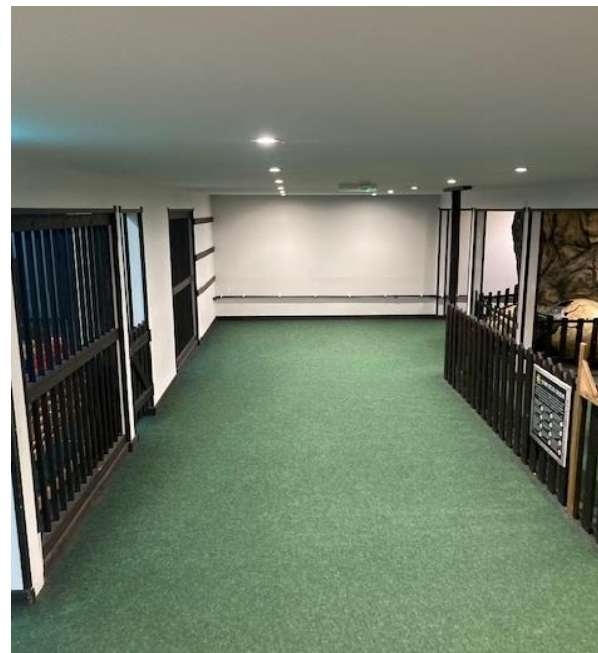
Capacity – 195 People





Dragon's Lair

Capacity – 185 People



The End